

*... when art  
is difficult*



**denise e beppe berna**

*... when art is difficult*

*to define*

*to understand*

*to love ...*



© denise & beppe berna  
2018, bologna, italy

all ... by  
beppe berna





**AMART.**

Antiquari Milanesi | ARTE È MILANO

PALAZZO DELLA PERMANENTE  
via filippo turati, 34 - MILAN

**stand n. 46**  
**ground floor**

---

may 8 – 13, 2018

*dogon*

*the snake and the*

*metamorphosis*

# Dogon Bombou-Toro

199X

Large sculpture representing the  
*nommo*.

18th century approx.  
Radiocarbon C14.

H. cm. 61

*Dutch collection of the early 1960's.  
Afrika Museum Berg En Dal  
(Nijmegen) / important Dutch  
collection, until 1966.  
Dutch collection.  
Pierre Dartevelle, Brussels.*

*Published:  
N. 2709 in "Asia Africa, A fine  
collection of various works of art",  
Paul Brandt, Amsterdam, 14/19  
December 1966.*

***the snake and the metamorphosis***













# Niongom

129U

Very rare ancestral genius  
sculpture.

15th / 17th century.  
1475 / 1660 A.D.  
Radiocarbon C14.

H. cm. 26,5

*Old Italian collection.*

***the snake and the  
metamorphosis***







# Dogon, Soninké – Djennenké influences

198X

Human figure representing the *nommo*.

18th / early 19th century.

H. cm. 38

*Collected by Franco Monti in the early 1960's.  
Joaquin Pecci, Brussels.*

***the snake and the metamorphosis***







# Dogon, Niongom/ Bombou-Toro

191X

Ancestral genius sculpture.  
The most important testimony of a  
very rare iconography of the  
ancient dogon art.

15th / 17th century.  
1432 /1635 A.D.  
Radiocarbon C14.

H. cm. 29

*Collected by Gilbert Huguenin in the  
late 1960's.*

*Swiss private collections.*

*Pierre Dartevelle, Brussels.*

*Private collection, Paris.*

*Publication:*

*N. 16 - pag. 3 «Arts africains dans les  
collections privées neuchâtelaises»,  
Claude Savary, Fondation le Grand-  
Cachot-de-Vent, 1985.*



***the snake and the metamorphosis***









# Archaic Dogon

196X

Very rare anthropomorphic statuette evocative of the myth of transformation of the *nommo* into a *snake*.

15th / 17th century.

1470 /1668 A.D.

Radiocarbon C14.

H. cm. 33,5

*Olivier Castellano, Paris.  
Private French collection.*

***the snake and the  
metamorphosis***











*mumuye*

*... and surroundings*





## Mumuye

189X

Extraordinary  
human figure.

H. cm. 76,5

*Collected between the end of  
the 1960's and the early  
1970's by Edward Klejman or  
Jacques Kerchache.*

*Ex Michel Andrault collection,  
Paris.*

*Alain de Monbrison, Paris.*







# Mumuye

193X

Rare female monkey mask opposing to the Vaa-Bong masks (male).

L. cm. 38

*Collected by Edward Klejman in the late 1960's.  
Private collection, Paris.*







## Chamba

101Y

Exceptional ancestral  
anthropomorphic figure  
protecting the community.

H. cm. 32,5.

*Old Belgian collection.  
Pierre Darteville, Brussels.*







# Mumuye

100Y

Superb human figure.

H. cm. 57

*Robert Duperrier, Paris, 1974.  
Michèle Yoyotte collection, Paris.  
Pierre Dartevelle, Brussels.*





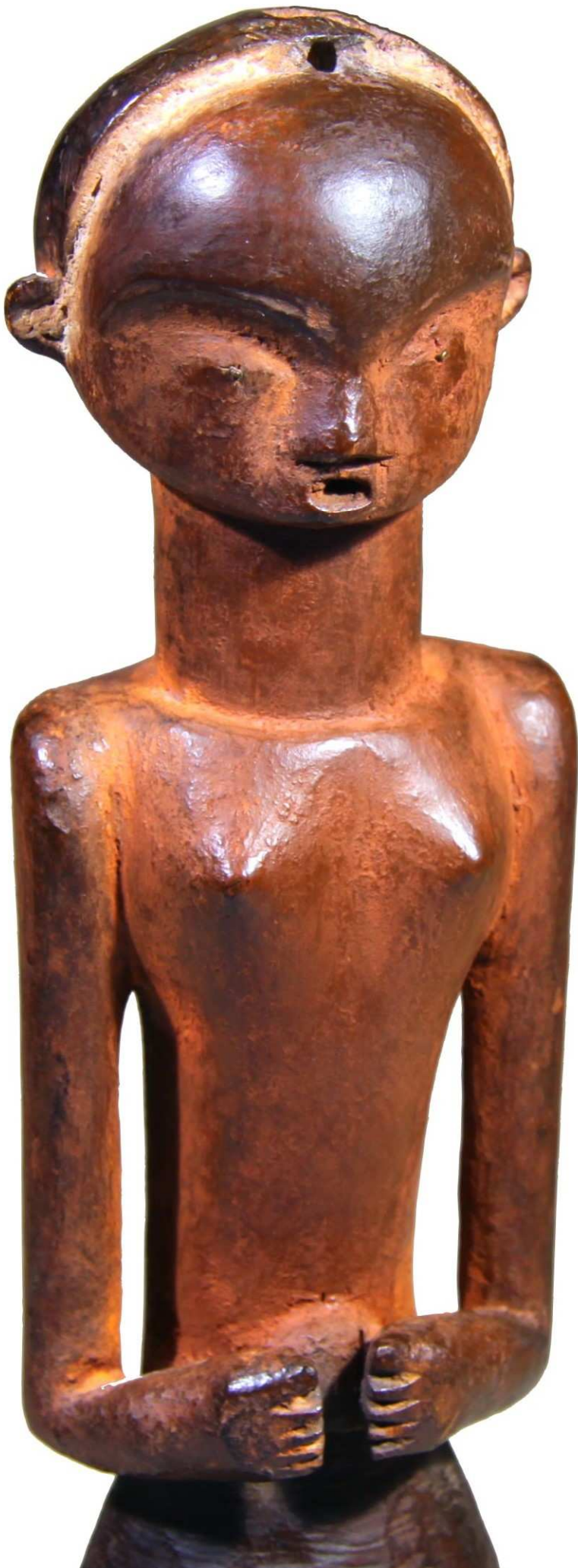




*the aesthetic*

*... absolute*





## Tsogho

193V

Superb figure for  
reliquary *bumba bwiti*.

H. cm. 30,5

Beginning of 20th century  
or earlier.

*Purchased in 1966 from the  
collection of Dr. Fritz Saxl  
(1890-1948).*

*Ernest Ohly, Berkeley  
Galleries, London.  
Old English collection.*

***the aesthetic ... absolute***











# Senufo

190X

Superb female figure.

H. cm. 31

*Constant Permeke collection [1886-1952], Belgian artist.*

*Important Belgian private collection.*

*Philippe Ratton, Paris.*

*Private French collection.*

*Yann Ferrandin, Paris.*

*Published in:*

*"Empreintes d'Afrique. L'art tribal au fil des fleuves", Bettina von Linting, 5continents, 2011, pag. 225 e 226, n. 88.*

*"49 sculptures de Côte-d'Ivoire", Philippe Ratton, 2014, pag. 27.*

***the aesthetic ... absolute***







# Hemba

165U

**Singiti**, commemorative  
statue of an ancestor.

*Master of the long faces.*

19th century.

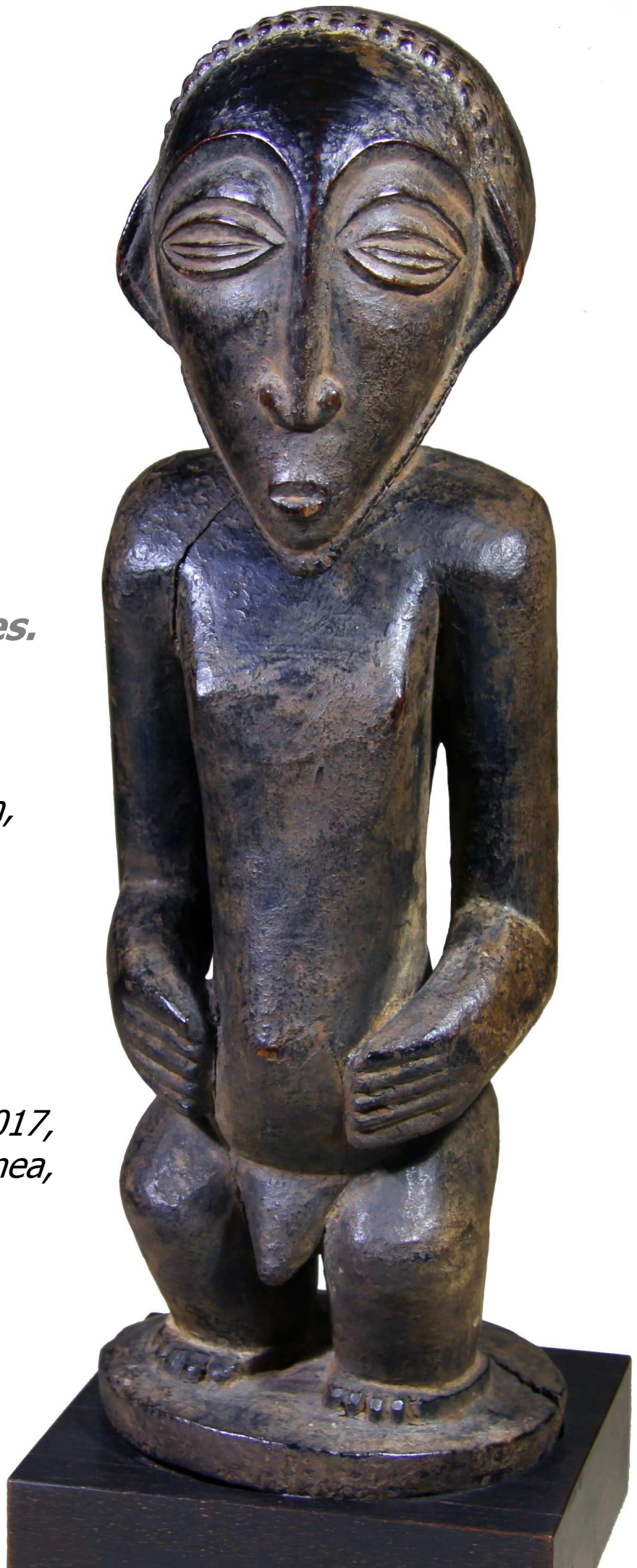
H. cm. 36

*Jean-Willy Mestach collection,  
Brussels, circa 1960's.*

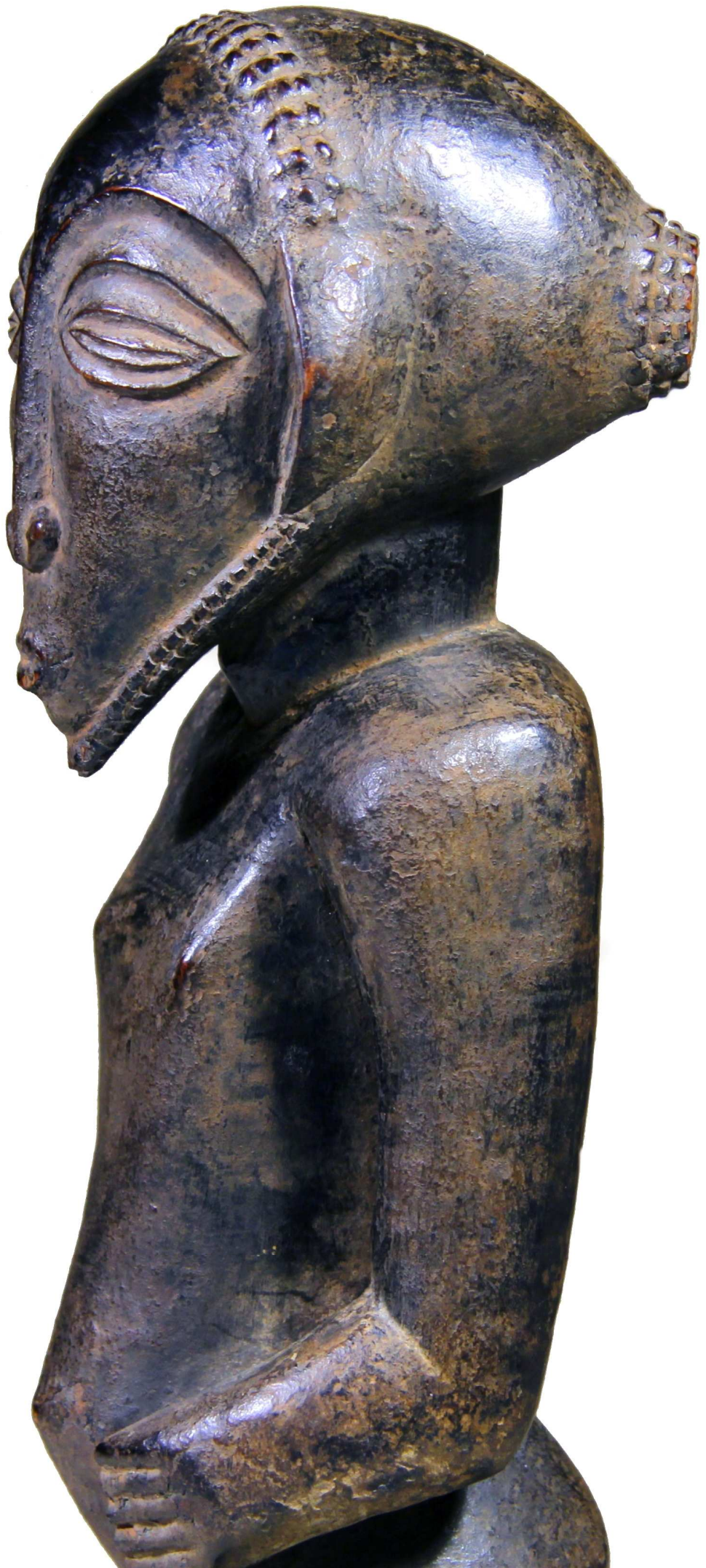
*European private collections.  
Pierre Dartevelle, Brussels.*

*Published and exhibited in:  
"Il Cacciatore Bianco / The  
White Hunter. Memorie e  
rappresentazioni africane" 2017,  
FM Centro Arte Contemporanea,  
Milano.*

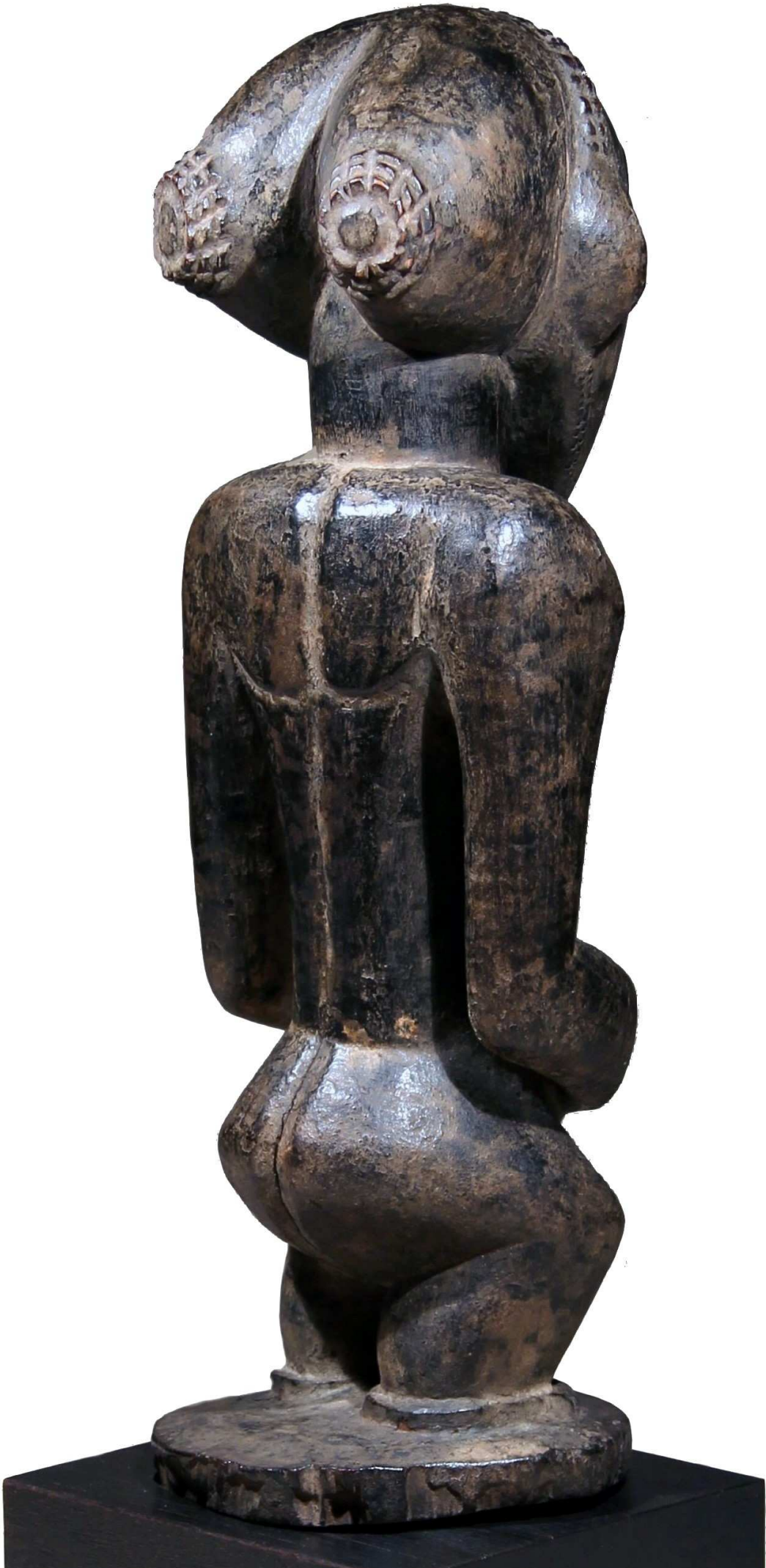
***the aesthetic ... absolute***











*pende*

*... extreme*



# Central Pende

194X

Very rare *buffalo of the savannah* mask.

H. cm. 33 approx.

*Old French collection.  
Edward Klejman, Paris.*











## Central Pende

195X

Superb *mbuya* mask.

H. cm. 33 approx.

Before 1940.

*Old French colonial collection.  
Edward Klejman, Paris*







*ciwara*

# Bamana

188X

Rare **ciwara**, Bamako style.

L. cm. 51

*Old French collection  
Abla and Alain Lecomte, Paris.*



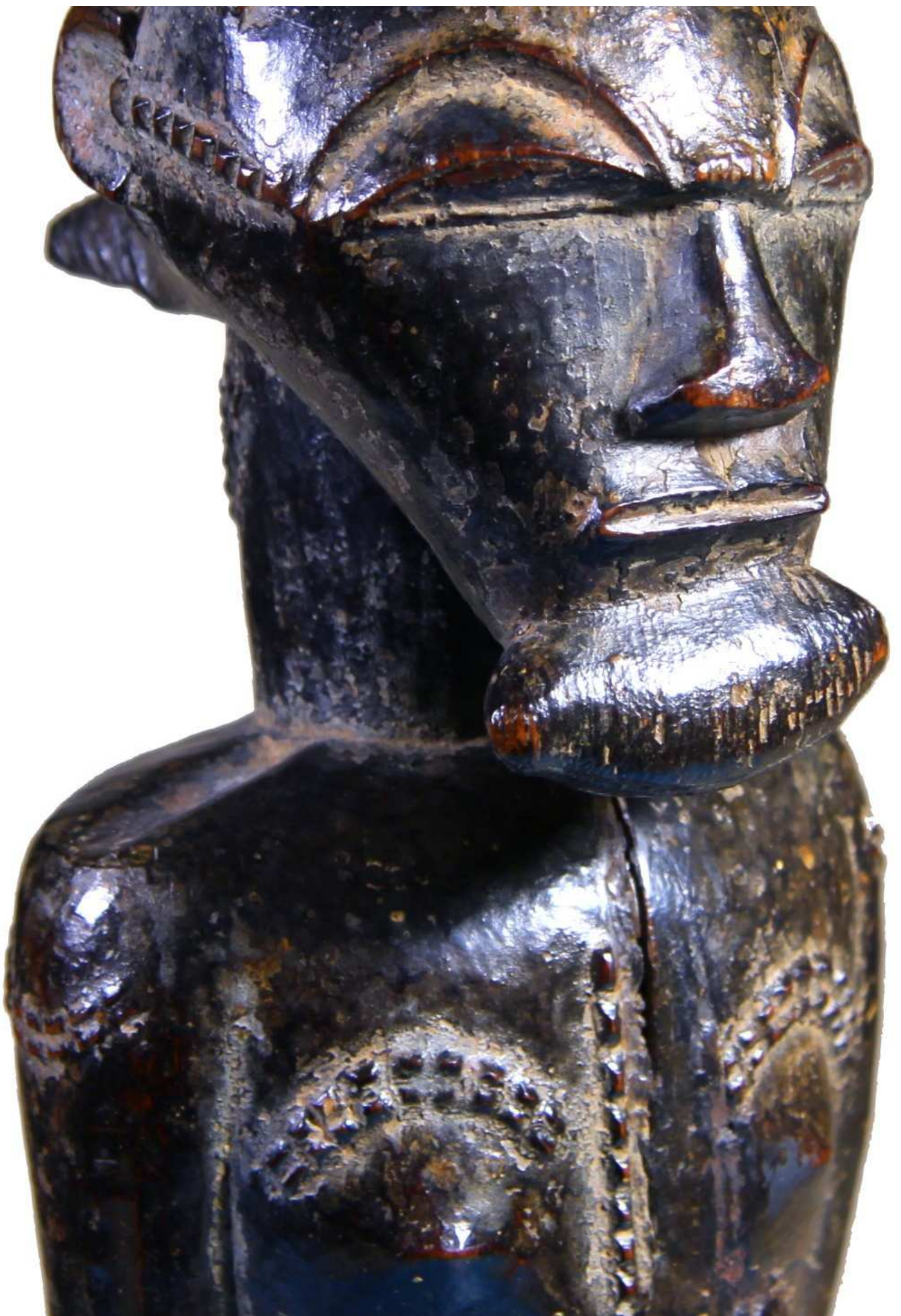




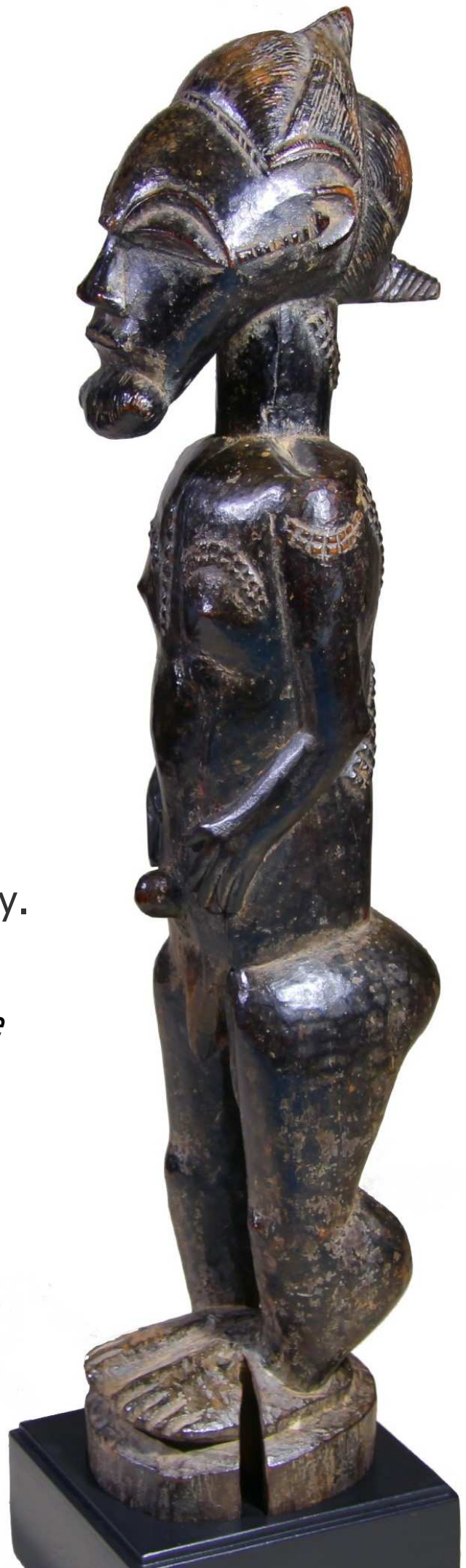
*blolo bian*

*... ancestral devotion*









## Baule

197X

*blolo bian.*

Late 19th / early 20th century.

H. cm. 44

*Collected by Franco Monti in the early 1960's.*

*Important Swiss collection from the 1960's.*

***... ancestral devotion***





... for more information: [berna@debberna.it](mailto:berna@debberna.it)



Egypt, cm. 6  
12th/17th dynasty

**Denise e Beppe Berna**

arte tribale - arte archeologica  
tribal art - ancient art

Via Borgo S. Pietro 43 - 40126 Bologna, Italy

Phone +39 051 253175

*su appuntamento - by appointment only*

copyright © d. & b. berna 2018